

## Guías lineales

### Serie HG, cuatro puntos de contacto

Tipo montaje	Modelo	Forma	Altura mm	Largo del riel mm
Cuadrada	HGH		28→90	100→4000
Brida	HGW		28→90	100→4000

**Aplicaciones:**

Centros de mecanizado, máquinas herramientas, máquina de corte, rectificadoras, inyectoras, máquinas automáticas, transfers, otros.

**Precarga:**

Clase	Código	Precarga
Precarga suave	Z0	0-0.02C
Precarga media	ZA	0.05-0.07C
Precarga pesada	ZB	mayores 0.10C

*Nota: "C" es la capacidad de carga dinámica.*

### Código para ordenar

HG W 25 H C E 2 R 1600 E ZA P II

**HG serie**

**Tipo montaje**

W= Tipo bridada  
H= Tipo cuadrada

**Tamaño**

15, 20, 25, 30, 35, 45, 55, 65

**Tipo de carga**

C= Pesada  
H= Super pesada

**Forma de C**

A= Montaje superior  
B= Montaje inferior  
C= Montaje superior/inferior

**N° de rieles por eje**

**Código de precisión**  
C, H, P, SP, UP

**Precarga: Z0, ZA, ZB**

**Opción de riel especial**

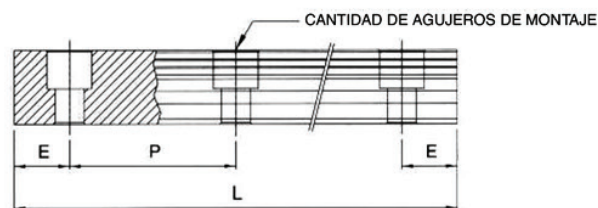
**Largo del riel (mm)**

**Tipo de montaje del riel**  
R= Superior  
T= Inferior

**N° de carros por riel**

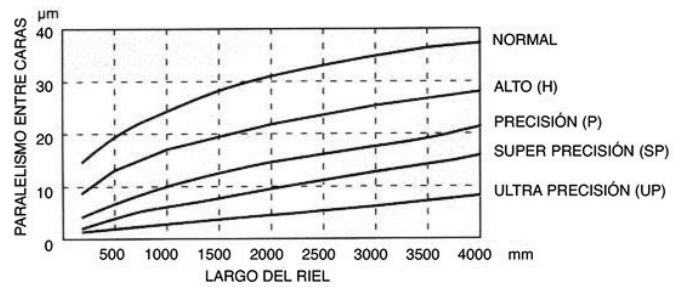
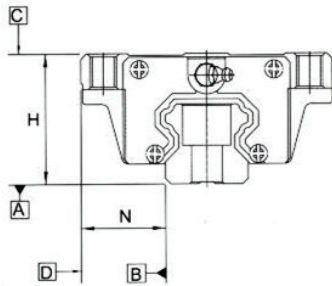
**Opciones especiales para carros**

### Guías lineales, largo standard y máximo



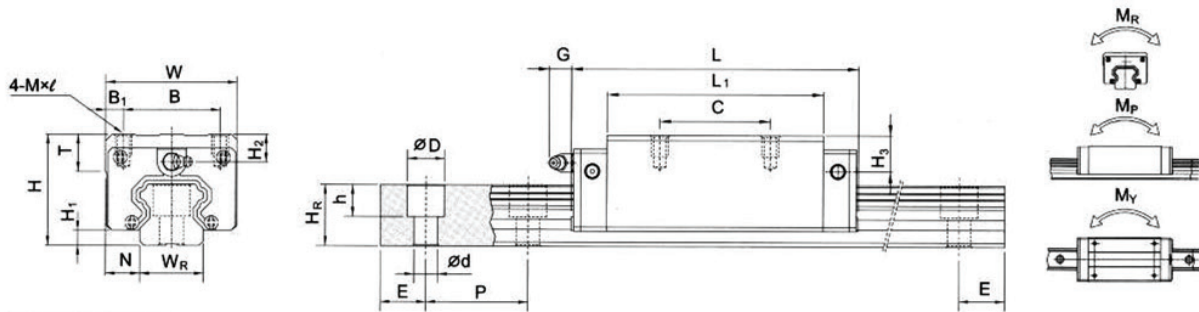
ITEM	HG15	HG20	HG25	HG30	HG35	HG45	HG55	HG65
Longitud standard L(n)	160(3)	220(4)	220(4)	280(4)	280(4)	570(6)	780(7)	1,270(9)
	220(4)	280(5)	280(5)	440(6)	440(6)	885(9)	1,020(9)	1,570(11)
	280(5)	340(6)	340(6)	600(8)	600(8)	1,200(12)	1,260(11)	2,020(14)
	340(6)	460(8)	460(8)	760(10)	760(10)	1,620(16)	1,500(13)	2,620(18)
	460(8)	640(11)	640(11)	1,000(13)	1,000(13)	2,040(20)	1,980(17)	
	640(11)	820(14)	820(14)	1,640(21)	1,640(21)	2,460(24)	2,580(22)	
	820(14)	1000(17)	1,000(17)	2,040(26)	2,040(26)	2,985(29)	2,940(25)	
		1240(21)	1,240(21)	2,520(32)	2,520(32)			
			1,600(27)	3,000(38)	3,000(38)			
Paso (P)	60	60	60	80	80	105	120	150
Distancia para el final (E)	20	20	20	20	20	22.5	30	35
Min. distancia para el final (E <sub>min</sub> )	5	6	7	8	8	11	13	14
Longitud máxima standard	1960(33)	4,000(67)	4,000(67)	3,960(50)	3,960(50)	3,930(38)	3,900(32)	3,970(26)
Longitud máxima	2000	4,000	4,000	4000	4000	4000	4,000	4,000

## Tipos de precisión



Ítem	Normal (C)	Alta (H)	Precisión (P)	Super precis. (SP)	Ultra precis. (UP)	Normal (C)	Alta (H)	Precisión (P)	Super precis. (SP)	Ultra precis. (UP)
Tipo	HG15, HG20					HG25, HG30, HG35				
Tolerancia en H	± 0.1	± 0.03	0 -0.03	0 -0.015	0 -0.008	± 0.1	± 0.04	0 -0.04	0 -0.02	0 -0.01
Tolerancia en N	± 0.1	± 0.03	0 -0.03	0 -0.015	0 -0.008	± 0.1	± 0.04	0 -0.04	0 -0.02	0 -0.01
Variación en H	± 0.02	0.01	0.006	0.004	0.003	0.02	0.015	0.007	0.005	0.003
Variación en N	± 0.02	0.01	0.006	0.004	0.003	0.03	0.015	0.007	0.005	0.003
Paralelismo entre caras C y A	± ver tabla del catálogo técnico									
Paralelismo entre caras D y B	± ver tabla del catálogo técnico									

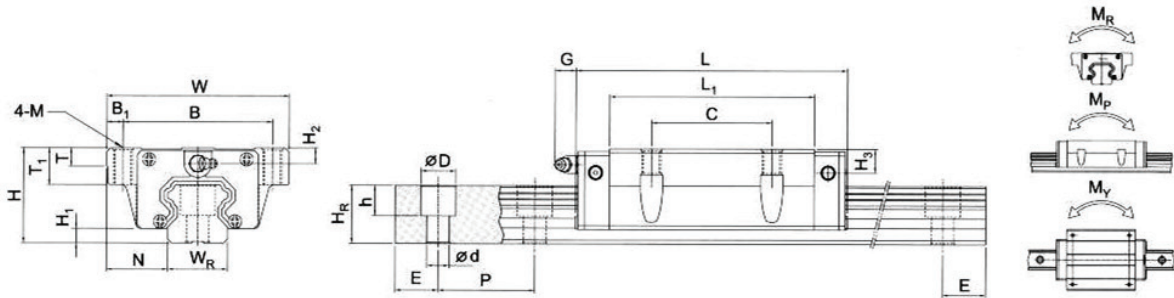
## Dimensiones para HGH-CA/HGH-HA



Modelo N°	Dimensiones del conjunto (mm)		Dimensiones del carro (mm)										Dimensiones de la guía (mm)										Tornillos de fijación (mm)	Carga dinámica básica C (kN)	Carga estática básica C <sub>0</sub> (kN)	Momento estático			Peso		
	H	H <sub>1</sub>	N	W	B	B <sub>1</sub>	C	L <sub>1</sub>	L	K <sub>1</sub>	K <sub>2</sub>	G	MxL	T	H <sub>2</sub>	H <sub>3</sub>	W <sub>R</sub>	H <sub>R</sub>	D	h	d	p				E	M <sub>R</sub> kNm	M <sub>P</sub> kNm	M <sub>Y</sub> kNm	Carro kg	Riel kg/m
HGH15CA	28	4.3	9.5	34	26	4	26	39.4	61.4	10	4.85	5.3	M4x5	6	7.95	7.7	15	15	7.5	5.3	4.5	60	20	M4x16	11.38	16.97	0.12	0.10	0.10	0.18	1.45
HGH20CA	30	4.6	12	44	32	6	36	50.5	77.5	12.25	6	12	M5x6	8	6	6	20	17.5	9.5	8.5	6	60	20	M5x16	17.75	27.76	0.27	0.20	0.20	0.30	2.21
HGH20HA							50	65.2	92.2	12.6																					
HGH25CA	40	5.5	12.5	48	35	6.5	35	58	84	16.8	6	12	M6x8	8	10	9	23	22	11	9	7	60	20	M6x20	26.48	36.49	0.42	0.33	0.33	0.51	3.21
HGH25HA							50	78.6	104.6	19.6																					
HGH30CA	45	6	16	60	40	10	40	70	97.4	20.25	6	12	M8x10	8.5	9.5	13.8	28	26	14	12	9	80	20	M8x25	38.74	52.19	0.66	0.53	0.53	0.88	4.47
HGH30HA							60	93	120.4	21.75																					
HGH35CA	55	7.5	18	70	50	10	50	80	112.4	20.6	7	12	M8x12	10.2	16	19.6	34	29	14	12	9	80	20	M8x25	49.52	69.16	1.16	0.81	0.81	1.45	6.30
HGH35HA							72	105.8	138.2	22.5																					
HGH45CA	70	9.5	20.5	86	60	13	60	97	139.4	23	10	12.9	M10x17	16	18.5	30.5	45	38	20	17	14	105	22.5	M12x35	77.57	102.71	1.98	1.55	1.55	2.73	10.41
HGH45HA							80	128.8	171.2	28.9																					
HGH55CA	80	13	23.5	100	75	12.5	75	117.7	166.7	27.35	11	12.9	M12x18	17.5	22	29	53	44	23	20	16	120	30	M14x45	114.44	148.33	3.69	2.64	2.64	4.17	15.08
HGH55HA							95	155.8	204.8	36.4																					
HGH65CA	90	15	31.5	126	76	25	70	144.2	200.2	43.1	14	12.9	M16x20	25	15	15	63	53	26	22	18	150	35	M16x50	163.63	215.33	6.65	4.27	4.27	7.00	21.18
HGH65HA							120	203.6	259.6	47.8																					

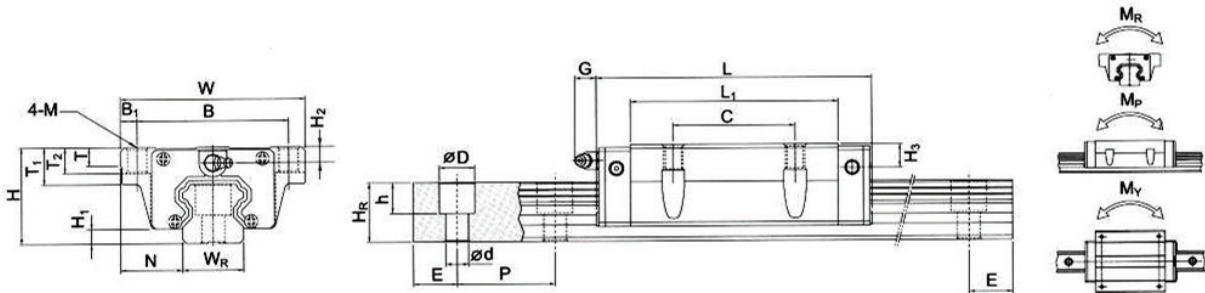
Nota: 1kgf = 9.81 N

Dimensiones para HGW-CA/HGW-HA



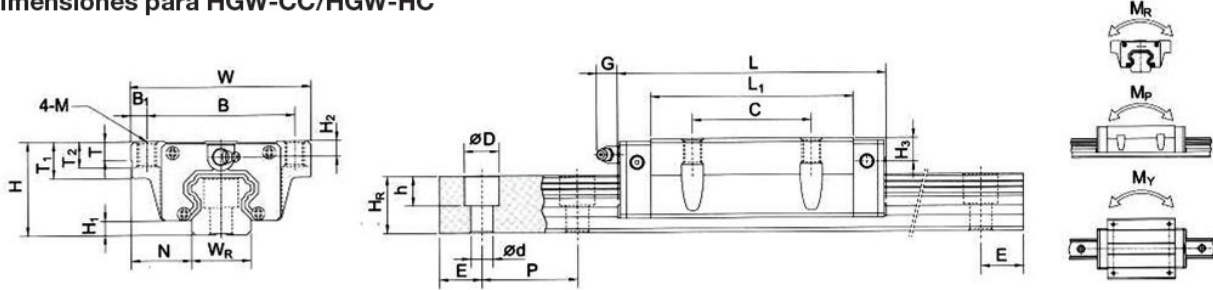
Modelo N°	Dimensiones del conjunto (mm)		Dimensiones del carro (mm)													Dimensiones de la guía (mm)										Tornillos de fijación (mm)	Carga dinámica básica C (kN)	Carga estática básica C <sub>0</sub> (kN)	Momento estático			Peso	
	H	H <sub>1</sub>	N	W	B	B <sub>1</sub>	C	L <sub>1</sub>	L	K <sub>1</sub>	K <sub>2</sub>	G	M	T	T <sub>1</sub>	H <sub>2</sub>	H <sub>3</sub>	W <sub>R</sub>	H <sub>R</sub>	D	h	d	P	E	M <sub>R</sub> kNm				M <sub>P</sub> kNm	M <sub>Y</sub> kNm	Carro kg	Riel kg/m	
HGW15CA	24	4.3	16	47	38	4.5	30	39.4	61.4	8	4.85	5.3	M5	6	8.9	3.95	3.7	15	15	7.5	5.3	4.5	60	20	M4x16	11.38	16.97	0.12	0.10	0.10	0.17	1.45	
HGW20CA HGW20HA	30	4.6	21.5	63	53	5	40	50.5 65.2	77.5 92.2	10.25 17.6	6	12	M6	8	10	6	6	20	17.5	9.5	8.5	6	60	20	M5x16	17.75 21.18	27.76 35.90	0.27 0.35	0.20 0.35	0.20 0.52	0.40 0.52	2.21	
HGW25CA HGW25HA	36	5.5	23.5	70	57	6.5	45	58 78.6	84 104.6	11.8 22.1	6	12	M8	8	14	6	5	23	22	11	9	7	60	20	M6x20	26.48 32.75	36.49 49.44	0.42 0.56	0.33 0.57	0.33 0.57	0.59 0.80	3.21	
HGW30CA HGW30HA	42	6	31	90	72	9	52	70 93	97.4 120.4	14.25 25.75	6	12	M10	8.5	16	6.5	10.8	28	26	14	12	9	80	20	M8x25	38.74 47.27	52.19 69.16	0.66 0.88	0.53 0.92	0.53 0.92	1.09 1.44	4.47	
HGW35CA HGW35HA	48	7.5	33	100	82	9	62	80 105.8	112.4 138.2	14.6 27.5	7	12	M10	10.1	18	9	12.6	34	29	14	12	9	80	20	M8x25	49.52 60.21	69.16 91.63	1.16 1.54	0.81 1.40	0.81 1.40	1.56 2.06	6.30	
HGW45CA HGW45HA	60	9.5	37.5	120	100	10	80	97 128.8	139.4 171.2	13 28.9	10	12.9	M12	15.1	22	8.5	20.5	45	38	20	17	14	105	22.5	M12x35	77.57 94.54	102.71 136.46	1.98 2.63	1.55 2.68	1.55 2.68	2.79 3.69	10.41	
HGW55CA HGW55HA	70	13	43.5	140	116	12	95	117.7 155.8	166.7 204.8	17.35 36.4	11	12.9	M14	17.5	26.5	12	19	53	44	23	20	16	120	30	M14x45	114.44 139.35	148.33 196.20	3.69 4.88	2.64 4.57	2.64 4.57	4.52 5.96	15.08	
HGW65CA HGW65HA	90	15	53.5	170	142	14	110	144.2 203.6	200.2 259.6	23.1 52.8	14	12.9	M16	25	37.5	15	15	63	53	26	22	18	150	35	M16x50	163.63 208.36	215.33 303.13	6.65 9.38	4.27 7.38	4.27 7.38	9.17 12.89	21.18	

Dimensiones para HGW-CB/HGW-HB



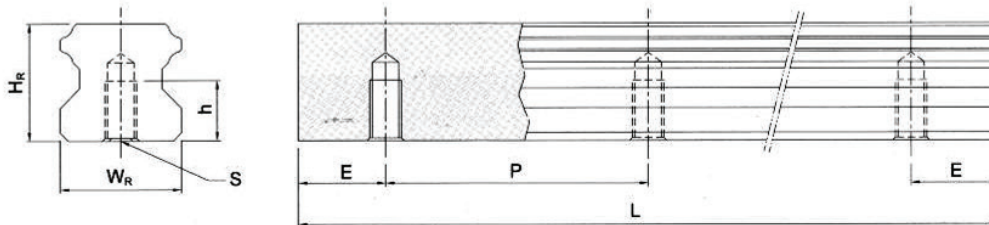
Modelo N°	Dimensiones del conjunto (mm)		Dimensiones del carro (mm)													Dimensiones de la guía (mm)										Tornillos de fijación (mm)	Carga dinámica básica C (kN)	Carga estática básica C <sub>0</sub> (kN)	Momento estático			Peso	
	H	H <sub>1</sub>	N	W	B	B <sub>1</sub>	C	L <sub>1</sub>	L	K <sub>1</sub>	K <sub>2</sub>	G	M	T	T <sub>1</sub>	T <sub>2</sub>	H <sub>2</sub>	H <sub>3</sub>	W <sub>R</sub>	H <sub>R</sub>	D	h	d	P	E				M <sub>R</sub> kNm	M <sub>P</sub> kNm	M <sub>Y</sub> kNm	Carro kg	Riel kg/m
HGW15CB	24	4.3	16	47	38	4.5	30	39.4	61.4	8	4.85	5.3	ø4.5	6	8.9	6.95	3.95	3.7	15	15	7.5	5.3	4.5	60	20	M4x16	11.38	16.97	0.12	0.10	0.10	0.17	1.45
HGW20CB HGW20HB	30	4.6	21.5	63	53	5	40	50.5 65.2	77.5 92.2	10.25 17.6	6	12	ø6	8	10	9.5	6	6	20	17.5	9.5	8.5	6	60	20	M5x16	17.75 21.18	27.76 35.90	0.27 0.35	0.20 0.35	0.20 0.52	0.40 0.52	2.21
HGW25CB HGW25HB	36	5.5	23.5	70	57	6.5	45	58 78.6	84 104.6	11.8 22.1	6	12	ø7	8	14	10	6	5	23	22	11	9	7	60	20	M6x20	26.48 32.75	36.49 49.44	0.42 0.56	0.33 0.57	0.33 0.57	0.59 0.80	3.21
HGW30CB HGW30HB	42	6	31	90	72	9	52	70 93	97.4 120.4	14.25 25.75	6	12	ø9	8.5	16	10	6.5	10.8	28	26	14	12	9	80	20	M8x25	38.74 47.27	52.19 69.16	0.66 0.88	0.53 0.92	0.53 0.92	1.09 1.44	4.47
HGW35CB HGW35HB	48	7.5	33	100	82	9	62	80 105.8	112.4 138.2	14.6 27.5	7	12.9	ø9	10.1	18	9	12.6	34	29	14	12	9	80	20	M8x25	49.52 60.21	69.16 91.63	1.16 1.54	0.81 1.40	0.81 1.40	1.56 2.06	6.30	
HGW45CB HGW45HB	60	9.5	37.5	120	100	10	80	97 128.8	139.4 171.2	13 28.9	10	12.9	ø11	15.1	22	15	8.5	20.5	45	38	20	17	14	105	22.5	M12x35	77.57 94.54	102.71 136.46	1.98 2.63	1.55 2.68	1.55 2.68	2.79 3.69	10.41
HGW55CB HGW55HB	70	13	43.5	140	116	12	95	117.7 155.8	166.7 204.8	17.35 36.4	11	12.9	ø14	17.5	26.5	17	12	19	53	44	23	20	16	120	30	M14x45	114.44 139.35	148.33 196.20	3.69 4.88	2.64 4.57	2.64 4.57	4.52 5.96	15.08
HGW65CB HGW65HB	90	15	53.5	170	142	14	110	144.2 203.6	200.2 259.6	23.1 52.8	14	12.9	ø16	25	37.5	23	15	15	63	53	26	22	18	150	35	M16x50	163.63 208.36	215.33 303.13	6.65 9.38	4.27 7.38	4.27 7.38	9.17 12.89	21.18

## Dimensiones para HGW-CC/HGW-HC



Modelo N°	Dimensiones del conjunto (mm)		Dimensiones del carro (mm)													Dimensiones de la guía (mm)							Tornillos de fijación (mm)	Carga dinámica básica C (kN)	Carga estática básica Co (kN)	Momento estático			Peso						
	H	H <sub>1</sub>	N	W	B	B <sub>1</sub>	C	L <sub>1</sub>	L	K <sub>1</sub>	K <sub>2</sub>	G	M	T	T <sub>1</sub>	T <sub>2</sub>	H <sub>2</sub>	H <sub>3</sub>	W <sub>R</sub>	H <sub>R</sub>	D	h				d	P	E	M <sub>R</sub> kNm	M <sub>p</sub> kNm	M <sub>y</sub> kNm	Carro kg	Riel kg/m		
HGW15CC	24	4.3	16	47	38	4.5	30	39.4	61.4	8	4.85	5.3	M5	6	8.9	6.95	3.95	3.7	15	15	7.5	5.3	4.5	60	20	M4x16	11.38	16.97	0.12	0.10	0.10	0.17	1.45		
HGW20CC	30	4.6	21.5	63	53	5	40	50.5	77.5	10.25	6	12	M6	8	10	9.5	6	6	20	17.5	9.5	8.5	6	60	20	M5x16	17.75	27.76	0.27	0.20	0.20	0.40	2.21		
HGW20HC								65.2	92.2	17.6																									
HGW25CC	36	5.5	23.5	70	57	6.5	45	58	84	11.8	6	12	M8	8	14	10	6	5	23	22	11	9	7	60	20	M6x20	26.48	36.49	0.42	0.33	0.33	0.59	3.21		
HGW25HC								78.6	104.6	22.1																									
HGW30CC	42	6	31	90	72	9	52	70	97.4	14.25	6	12	M10	8.5	16	10	6.5	10.8	28	26	14	12	9	80	20	M8x25	38.74	52.19	0.66	0.53	0.53	1.09	4.47		
HGW30HC								93	120.4	25.75																									
HGW35CC	48	7.5	33	100	82	9	62	80	112.4	14.6	7	12	M10	10.1	18	13	9	12.6	34	29	14	12	9	80	20	M8x25	49.52	69.16	1.16	0.81	0.81	1.56	6.30		
HGW35HC								105.8	138.2	27.5																									
HGW45CC	60	9.5	37.5	120	100	10	80	97	139.4	13	10	12.9	M12	15.1	22	15	8.5	20.5	45	38	20	17	14	105	22.5	M12x35	77.57	102.71	1.98	1.55	1.55	2.79	10.41		
HGW45HC								128.8	171.2	28.9																									
HGW55CC	70	13	43.5	140	116	12	95	117.7	166.7	17.35	11	12.9	M14	17.5	26.5	17	12	19	53	44	23	20	16	120	30	M14x45	114.44	148.33	3.69	2.64	2.64	4.52	15.08		
HGW55HC								155.8	204.8	36.4																									
HGW65CC	90	15	53.5	170	142	14	110	144.2	200.2	23.1	14	12.9	M16	25	37.5	23	15	15	63	53	26	22	18	150	35	M16x50	163.63	215.33	6.65	4.27	4.27	9.17	21.18		
HGW65HC								203.6	259.6	52.8																									

## Dimensiones para riel HGR-T (montaje inferior)



Modelo N°	Dimensiones del carro (mm)						Peso (kg/m)
	W <sub>R</sub>	H <sub>R</sub>	S	H	P	E	
HGR15T	15	15	M5 x 0.8P	8	60	20	1.48
HGR20T	20	17.5	M6 x 1P	10	60	20	2.29
HGR25T	23	22	M6 x 1P	12	60	20	3.35
HGR30T	28	26	M8 x 1.25P	15	80	20	4.67
HGR35T	34	29	M8 x 1.25P	17	80	20	6.51
HGR45T	45	38	M12 x 1.75P	24	105	22.5	10.87
HGR55T	53	44	M14 x 2P	24	120	30	15.67
HGR65T	63	53	M20 x 2.5P	30	150	35	21.73