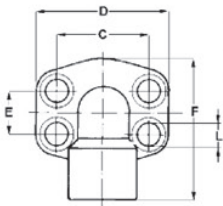
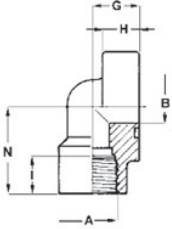


Codo a 90° roscado NPT/BSP

Material:
 acero forjado.
 A pedido
 inoxidable.



Presión máx. Kg/cm ²	Medida SAE	Tipo	Dimensiones (mm)													M (Tornillo)		O-Ring	Peso (Kg)
			A	B	C	D	E	F	G	H	I	L	N	Métrica	UNC				
														3000					
345	1/2"	AFS8090N	1/2" NPT	13	38,1	54	17,5	60	20	16	19	9	37	M 8x30	5/16x1"1/4	2-210	0,28		
345	1/2"	AFS8090N038	3/8" NPT	13	38,1	54	17,5	60	20	16	19	9	37	M 8x30	5/16x1"1/4	2-210	0,29		
345	3/4"	AFS10090N	3/4" NPT	19	47,6	65	22,2	63	24	18	19	11	38	M 10x35	3/8x1"1/2	2-214	0,45		
345	1"	AFS10290N	1" NPT	25	52,3	70	26,2	70	28	19	20	11	43	M 10x35	3/8x1"1/2	2-219	0,56		
276	1 1/4"	AFS10490N	1 1/4" NPT	32	58,7	79	30,2	85	34	21	22	11,5	51	M 10x40	7/16x1"3/4	2-222	0,89		
207	1 1/2"	AFS10690N	1 1/2" NPT	38	69,8	93	35,7	95	38	25	25	13,5	56	M 12x45	1/2x1"3/4	2-225	1,18		
207	2"	AFS10890N	2" NPT	51	77,77	110	42,8	110	42	25	28	13,5	65	M 12x45	1/2x1"3/4	2-228	2,06		
172	2 1/2"	AFS21090N	2" 1/2 NPT	63	88,9	120	50,8	118	53	99	30	13,5	59	M 12x45	-	2-275	8,2		
			6000																
414	1/2"	AFS40190N012	1/2" NPT	13	40,5	54	18,2	60	20	16	19	9	37	M 8x30	5/16x1"1/4	2-210	0,28		
414	1/2"	AFS40190N038	3/8" NPT	13	40,5	54	18,2	60	20	16	19	9	37	M 8x30	5/16x1"1/4	2-210	0,29		
414	3/4"	AFS40290N	3/4" NPT	19	50,8	70	23,8	70	28	19	20	11	43	M 10x35	3/8x1"1/2	2-214	0,69		
414	1"	AFS40390N	1" NPT	25	57,1	79	27,7	85	34	21	22	13	51	M 12x45	7/16x1"3/4	2-219	1,11		
414	1 1/4"	AFS40490N	1 1/4" NPT	32	66,7	93	31,7	95	38	25	25	15	56	M 14x45	1/2x1"3/4	2-222	1,45		
414	1 1/2"	AFS40590N	1 1/2" NPT	38	79,3	110	36,5	110	42	25	28	17	65	M 16x50	5/8x2"	2-225	2,75		
414	2"	AFS40690N	2" NPT	51	96,82	134	44,45	132	45	35	33	21	75	M 20x70	3/4x2"1/2	2-226	3,95		

B

7

Código para ordenar

Brida sola rosca NPT **AFS.../90 N**
 Brida sola rosca BSP **AFS.../90 G**

Brida p/soldar "weld-in" **AFS.../90 S**
 Brida p/soldar "weld-on" **AFS.../90 ST**
 Bridas con tornillos métricos, Arandelas y O-Ring **S.../90...M**

Bridas con tornillos unc,
 Arandelas y O-Ring **AFS.../90...U**