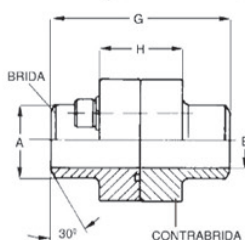
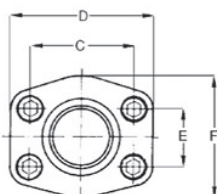


## Bridas SAE simples/dobles para soldar "WELD-ON"

**B**  
6



**Material: acero forjado.**  
Material inoxidable para tubos milimétricos, a pedido.

Presión Máxima Kg/cm <sup>2</sup>	Medida SAE	Tipo	Dimensiones (mm)										O-Ring	Peso (Kg)		
			A	B	C	D	E	F	G	H	M (Tornillo)					
			Métrica	UNC												
<b>3000</b>																
345	1/2"	DFS80ST	21,5	13	38,1	57	17,48	46	72	32	M 8x30	5/16x1"1/4	2-210	0,55		
345	1/2"	DFS80ST038	17,5	13	38,1	57	17,48	46	72	32	M 8x30	5/16x1"1/4	2-210	0,51		
345	3/4"	DFS100ST	28	19	47,63	65	22,23	50	72	36	M 10x35	3/8x1"1/2	2-214	0,86		
345	1"	DFS102ST	34	25	52,37	70	26,19	56	76	36	M 10x35	3/8x1"1/2	2-219	0,98		
276	1 1/4"	DFS104ST	42,8	32	58,72	79	30,18	68	82	42	M 10x40	7/16x1"3/4	2-222	1,47		
207	1 1/2"	DFS106ST	48,6	38	69,85	93	35,71	78	88	50	M 12x45	1/2x1"3/4	2-225	2,23		
207	2"	DFS108ST	61	51	77,77	102	42,88	90	90	50	M 12x45	1/2x1"3/4	2-228	2,56		
172	2 1/2"	DFS110ST	77	63	88,9	114	50,8	105	100	50	M 12x45	1/2x1"3/4	2-232	3,38		
138	3"	DFS112ST	92	73	106,38	134	61,93	124	100	54	M 16x50	5/8x2"	2-237	5,18		
34	3 1/2"	DFS114ST	103	89	120,65	152	69,85	136	96	54	M 16x50	5/8x2"	2-241	5,23		
34	4"	DFS116ST	115,5	99	130,18	162	77,77	146	96	54	M 16x50	5/8x2"	2-245	6,22		
34	5"	DFS116ST	140,2	120	152,4	184	92,08	180	100	56	M 16x50	5/8x2"	2-245	12,12		
<b>6000</b>																
414	1/2"	DFS401ST012	21,5	13	40,49	57	18,24	46	72	32	M 8x30	5/16x1"1/4	2-210	0,55		
414	1/2"	DFS401ST038	17,5	13	40,49	57	18,24	46	72	32	M 8x30	5/16x1"1/4	2-210	0,51		
414	3/4"	DFS402ST	28	19	50,8	71	23,8	55	70	42	M 10x35	3/8x1"1/2	2-214	1,13		
414	1"	DFS403ST	34	25	57,15	79	27,76	68	82	42	M 12x45	7/16x1"3/4	2-219	1,54		
375	1 1/4"	DFS404ST	42,8	32	66,68	93	31,75	78	88	50	M 14x45	1/2x1"3/4	2-222	2,37		
320	1 1/2"	DFS405ST	48,6	38	79,38	112	36,5	94	100	60	M 16x50	5/8x2"	2-225	3,87		
250	2"	DFS406ST	61	51	96,82	134	44,45	114	130	74	M 20x70	3/4x2"1/2	2-228	6,75		
230	2" 1/2	DFS407ST	76,6	63	123,8	180	58,7	152	160	90	M 24	7-Aug	2-275	15,30		
200	3"	DFS408ST	90	73	152,4	208	71,4	178	180	110	M 30	1"1/8	2-337	25,55		

### Código para ordenar

Brida sola ..... **AFS...ST**  
 Contrabrida sola ..... **GFS...ST**

Bridas con tornillos métricos, Arandelas y O-Ring... **DFS...STM**  
 Bridas con tornillos unc, Arandelas y O-Ring ..... **DFS...STU**